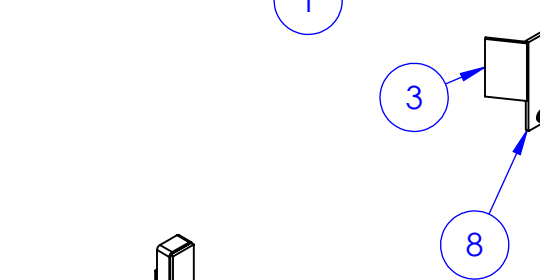
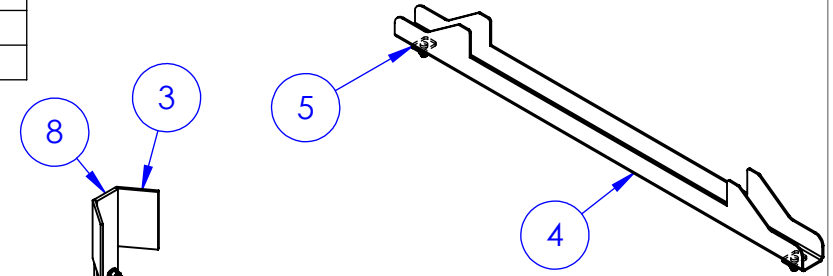
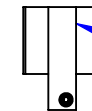


ITEM NO.	PART NUMBER	DESCRIPTION	DRAWING #	QTY.
1	BO-5/8x1-3/4 FLHCS	BOLT 5/8 x 1-3/4" FLANGED	STOCK	6
2	BO-5/8 HNN	LOCK NUT 5/8	STOCK	6
3	FL .25 X 4 L 6.625	LENGTH: 6-5/8"	STOCK	4
4	FP-CLL2-1	FRONT CROSS MEMBER SUPPORT, CLL-2	90-1802-21	1
5	FP-CLL2-7	LEVEL LOCK, FRONT REINFORCING PLATE	90-2805	2
6	FP-CLL2- REAR DS	CLL-2 LEVEL LOK REAR DRIVER SIDE	90-1802-28	1
7	FP-CLL2- REAR PS	CLL-2 LEVEL LOK REAR PASSENGER SIDE	90-1802-29	1
8	FP-LL STRAP 10.1875	LEVEL LOK MOUNTING STRAP 10-3/16"	90-2821	2

REVISIONS			
REV.	DESCRIPTION	DATE	APPROVED
A	REV. TO NEW STANDARD PRINT FROM 10-1816	1/21/2013	



**1988-2000 CHEVY/GMC  
40" or 56" CAB TO AXLE  
SINGLE/DUAL WHEEL**



FIELD WELD  
TYP.

SECTION A-A  
SCALE 1:19

DIMENSIONS ARE IN INCHES  
TOLERANCES:  
FRACTIONAL  $\pm 1/16$   
ANGULAR: MACH  $\pm 1$  BEND  $\pm$   
TWO PLACE DECIMAL  $\pm 010$   
THREE PLACE DECIMAL  $\pm 005$

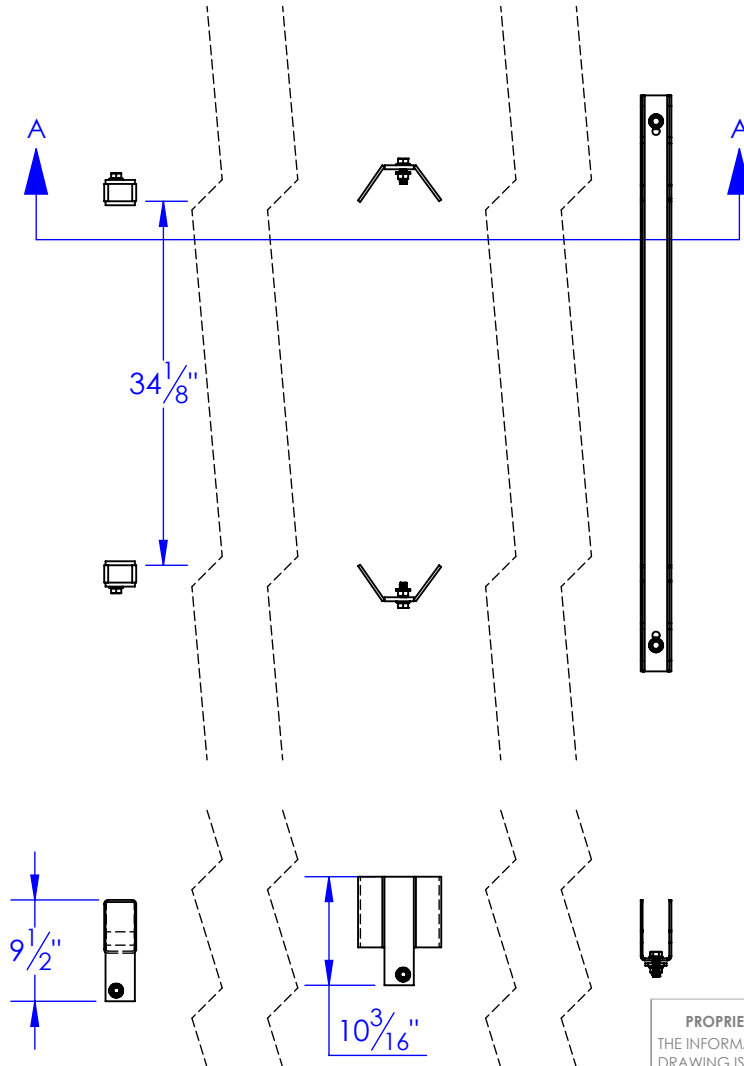
MATERIAL ---  
DO NOT SCALE DRAWING

NAME	DATE
DRAWN HEATH	1/29/2013
PART #	LL-CLL-2
ASM #	
COMMENTS:	
1988-2000 CHEVY/GMC 56" C/A LEVEL LOCK TYPE 2	

P.O. BOX 248,  
SABETHA, KS 66534



SIZE <b>A</b>	DWG. NO. <b>90-1802</b>	REV. <b>A</b>
SCALE: 1:18	WEIGHT: 45.61	SHEET 1 OF 1



**PROPRIETARY AND CONFIDENTIAL**  
THE INFORMATION CONTAINED IN THIS  
DRAWING IS THE SOLE PROPERTY OF TRIPLE  
C INC. ANY REPRODUCTION IN PART OR  
AS A WHOLE WITHOUT THE WRITTEN  
PERMISSION OF TRIPLE C INC. IS PROHIBITED.

# 60" & 84" Cab to Axle Single/Dual Wheel

Kit contains 8 straps. Use 3 straps per side when mounting an HB 2X0 and 4 straps per side when mounting an HB 3X0 or longer Hydra Bed.

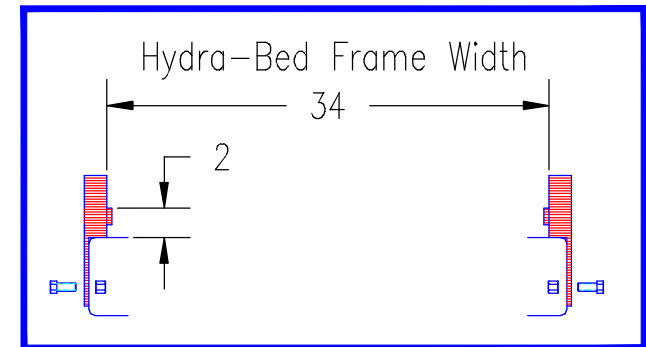
05/25/05

## GENERAL INSTRUCTIONS AND CAUTIONS

Note: When welding, attach welder ground only to Hydra-Bed, not to truck frame. Use low-hydrogen rod or wire electrode. NEVER weld to the frame of the truck. Correct installation of the Level-Lok system assures Front to Rear and Side to Side leveling as well as Left to Right centering of the Hydra-Bed. Never obstruct factory overload spring mounting locations.

When drilling truck frame, do not damage any part of the braking, fuel or electrical systems.

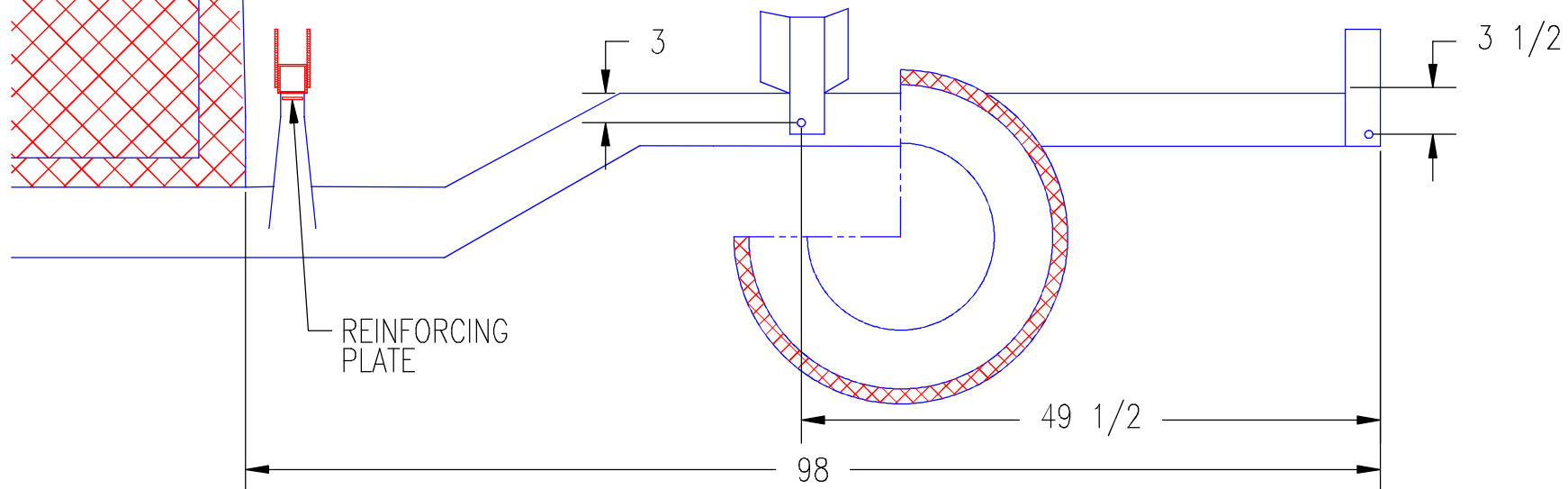
## VIEW OF REAR LEVEL-LOKS ON TRUCK FRAME



Bolt 2 1/2x2 1/2x54" tube to factory frame risers placing reinforcing plates under risers. Center Hydra-Bed 10" from each end of tube. Weld Hydra-Bed frame to tube risers. Hydra-Bed frame will be resting on tube and between risers.

Attach flat 3/8x3x10 strap to oblong hole in frame approx 49 1/2" from rear of frame. Weld 1/4x4x6 plates between strap and Hydra-Bed frame.

Locate rear CLL-2 over 1/2" pilot hole approx 1 1/4" from rear of frame. Drill hole to 5/8". Bolt CLL-2 in place.



CLL-2

1988-2000 Chevy/GMC  
56" Cab to Axle Single/Dual Wheel

05/30/01